

HOME LEARNING MAKER MAT

Research and present a short report on the history of Ridley Road Market.



Use your observation skills to create a detailed [sketch](#) of an Emperor Moth.



How has the Emperor Moth adapted to protect itself from predators?

Observe the differences between bird's beaks. For example, a kingfisher and a hummingbird.



Use this [link](#) to practise your long multiplication.



Year 6



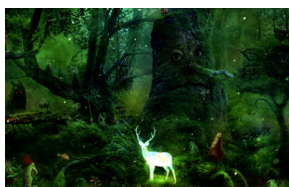
Autumn 2

Design an environment suited to a peppered moth.



How can you ensure the moth is protected from predators?

Explore the details in the [image](#). Choose a mythical creature to describe using similes, or attempt one of the challenges.



Use personification and alliteration to describe the setting in the Galapagos Islands.



Write a character description about the main character from the book you are reading.



We look forward to seeing your outcomes!