

HOME LEARNING MAKER MAT

Please return your completed activities by Monday 5th February

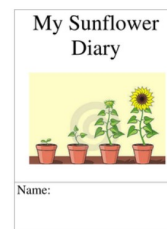
Are there any creatures in your garden or nearby habitats? Photograph them in their surroundings.



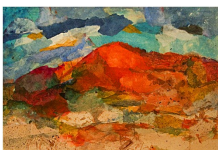
Turn a shoebox into a vibrant habitat. Include a variety of animals and plant life you might find there.



Keep a diary of how you have cared for a living thing.



Create a habitat collage, with pictures, colour and texture to represent an environment and all its living things.



Year 2

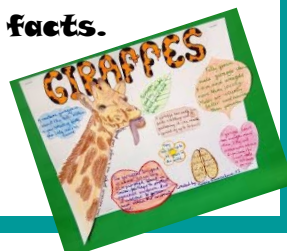
Design a device to feed an animal or living thing - how will it help it survive?



Collect or record a selection of living things in a local habitat, can you sort them into categories?



Make an animal fact file (real or imaginary), including a description of its habitat and diet and any other interesting facts.



Keep an observational diary (photos or drawings) of a plant or tree. How does it change? What do you notice?

